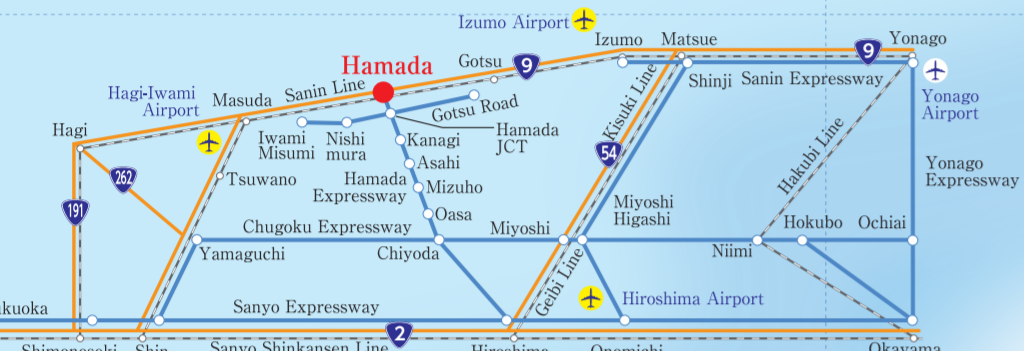


Hamada Travel Guide MAP

ACCESS



- Hamada City**
- ~50min. Hagiiwami Airport
 - ~2hrs. Izumo Airport
 - ~1hr 45min. Hiroshima Airport
 - ~2hrs. Hiroshima Station
 - ~1hr 10min. Sanyo Expressway Hiroshima I.C.



4 Sekishu Washi Center
Listen to simple and easy to understand explanations about the history and techniques behind UNESCO Intangible Cultural Heritages [Sekishu Banshi] and [Sekishu Washi]. You can also try your hand at papermaking!

List of Major Facilities

Ocean (0855)	Hot Springs (0855)
I-4 Iwami Tatamigaura 24-1085	D-3 Asahi Hot Springs (Asahi Villa) 45-0321
I-4 Iwami Tatamigaura Museum 28-0301	B-3 Kowa Hot Springs 35-8110
C-3 Shimane Aquarium AQUAS 28-3900	C-2 Yuya Hot Springs (Kinta no Sato) 42-3555
F-7 Hamada Fishing Port 25-9520	D-2 Yuya Hot Springs (Koyasu Hana Yukan) 42-0021
I-1 Iwami Seaside Park 28-2231	D-2 Mimata Hot Springs (Onsenkaikan) 42-0353
I-4 Kokutu Beach 24-1085	D-2 Mimata Hot Springs (Hoyo Center) 42-1686
B-2 Tanoura Park 32-2565	
Scenery (0855)	Leisure (0855)
B-3 Misumi Park's Azaleas 32-2803	C-1 Sun Village Hamada 28-1300
C-3 Yasaka Furusato Taiken Mura 48-2612	E-3 Asahi Tengston Snow Park 47-0101
C-3 Matsugatani Valley 48-2112	D-2 Kinta Berryne Farm and Cafe 42-2515
B-3 Misumi Park's Plum Blossom Forest 32-2803	D-2 Kanagi Western Riding Park 42-2222
B-3 Misumi Obira Cherry Blossom 32-2803	
B-3 Misumi Park's Plum Blossom Forest 32-2803	
B-3 Misumi Obira Cherry Blossom 32-2803	
D-2 Murodani Terraced Rice Fields 45-1437	
D-2 The Remnants of Kohin Tetsudo 25-9530	
G-6 Kitamaebune Cargo Ship Port Tonoura 24-1085	
Culture (0855)	Car Rental (0855)
G-8 Hamada Children's Museum of Art 23-8451	G-7 Shimane Toyota Rental and Lease 22-5757
B-2 Sekishu Washi Center 32-4170	G-7 CAL Car Rentals Hamada 23-8585
B-2 Sekishu Art Museum 32-4388	H-6 Hamada Rental and Lease Ltd. 23-5282
B-3 Ryouunji Temple 32-0960	
D-2 Shorenji Temple 45-0304	
G-7 Hamada Castle Ruins 24-1085	

Bicycle Rental (0855)	Hotels (0855)
G-5 Hamada Tourism Association 24-1085	I-5 1 Kokumin Shukusha Senjoen 28-1255
JR, Bus, Taxi (0855)	H-7 2 Green Rich Hotel Hamada Ekimae 24-1234
JR West Hamada Station 22-0611	H-7 3 Toko Hotel 23-5151
Iwami Kotsu Co., Ltd. Hamada Sales Office 27-2211	G-7 4 Hamada New Castle Hotel 23-5880
City Bus (Kanagi, Asahi, Misumi, Yasaka) 22-2612	H-7 5 Hamada Washington Hotel Plaza 23-6111
Hamada Haiya Ltd. 22-2000	H-7 6 Hotel Suehiro 23-1460
Minato Dalichi Koutsuu (Dispatch Center) 22-0900	H-7 7 Business Hotel Hamaichi 23-0511
Chuo Taxi 22-2211	H-7 8 Hotel Matsuo 22-2520
Nihon Kotsu Co., Ltd. Hamada Sales Office 25-2020	B-2 9 Marine Hotel Harimo 32-0370
Togane Taxi 28-0103	
Kanagi Taxi 42-0003	
Yasaka Taxi 45-0040	
Nihon Kotsu Co., Ltd. Misumi Sales Office 48-2929	
Rakuraku Taxi 25-0012	
Highway Express Bus (Osaka bound (Daytime)) (0570)	Hot Springs Facilities (0855)
Chugoku JR Bus Reservation Call Center 666-012	F-7 10 Seikai Villa 22-0571
Highway Express Bus (Osaka bound (Nighttime)) (0856)	D-2 11 Iwatake Villa 42-0363
Iwami Kotsu Highway Express Bus 24-0085	D-2 12 Kanagi Kanko Hotel 42-1000
Reservation Center	D-2 13 Toraya Ryokan 42-1550
	D-2 14 Toraya Ryokan 42-0405
	D-2 15 Bijiyou Kameya Ryokan 42-0320
	D-2 16 Fukuya Ryokan 42-0402
	D-2 17 Yamane Ryokan 42-1337
	D-2 18 Ryokan Mikuniya 42-0355
	C-2 19 Refresh Park Kinta no Sato 42-3555
	D-2 20 Kakurenno Sato Yukari 45-1180
	D-2 21 Shirotsumi Villa 45-0255
	D-2 22 Hotel Kawasumi 45-0007
	B-3 23 Kowa Hot Springs 35-8110

Ryokan (Japanese-style inns) (0855)
G-7 24 Sanso Ryokan 23-1372
H-7 25 Tsudaya Ryokan 22-0838
G-7 26 Tsumodani Ryokan 22-0223
H-7 27 Toraya Ryokan 22-1716
I-5 28 Tamami Villa 28-0504
C-3 29 Komatsujii 48-2711
B-2 30 Issero 32-0006
A-2 31 Tsukurakametei 28-7393
Accommodations (0855)
I-5 32 Egawa 28-0446
I-4 33 Shimaya 28-0574
G-6 34 Tonoura 23-8220
G-6 35 Sakai 47-0244
B-2 36 Harumi 32-2120
B-2 37 Daikokuya 32-0521
Others (0855)
C-1 38 Iwami Seaside Park 28-2231
D-2 39 Kanagi Western Riding Park 42-2222
D-2 40 Yume no Nemura Cabins 42-2900
E-3 41 Asahi Tengston Training Center 47-0101
D-3 42 Green Village Log House 47-0777
E-3 43 Yamabiko Lodge 47-0012
C-3 44 Furusato Taiken Mura 48-2612
C-3 45 Wakao Manabiya Kan 44-0830

Tabikura no Go Annai (Online Reservation Site)



Worried about last-minute accommodations? Rest easy with Tabikura. Search for open rooms and make reservations with ease! You can access this site via Hamada Tourism Association's Homepage, "HAMANA VI."

<http://www.kankou-hamada.org/content/access/>

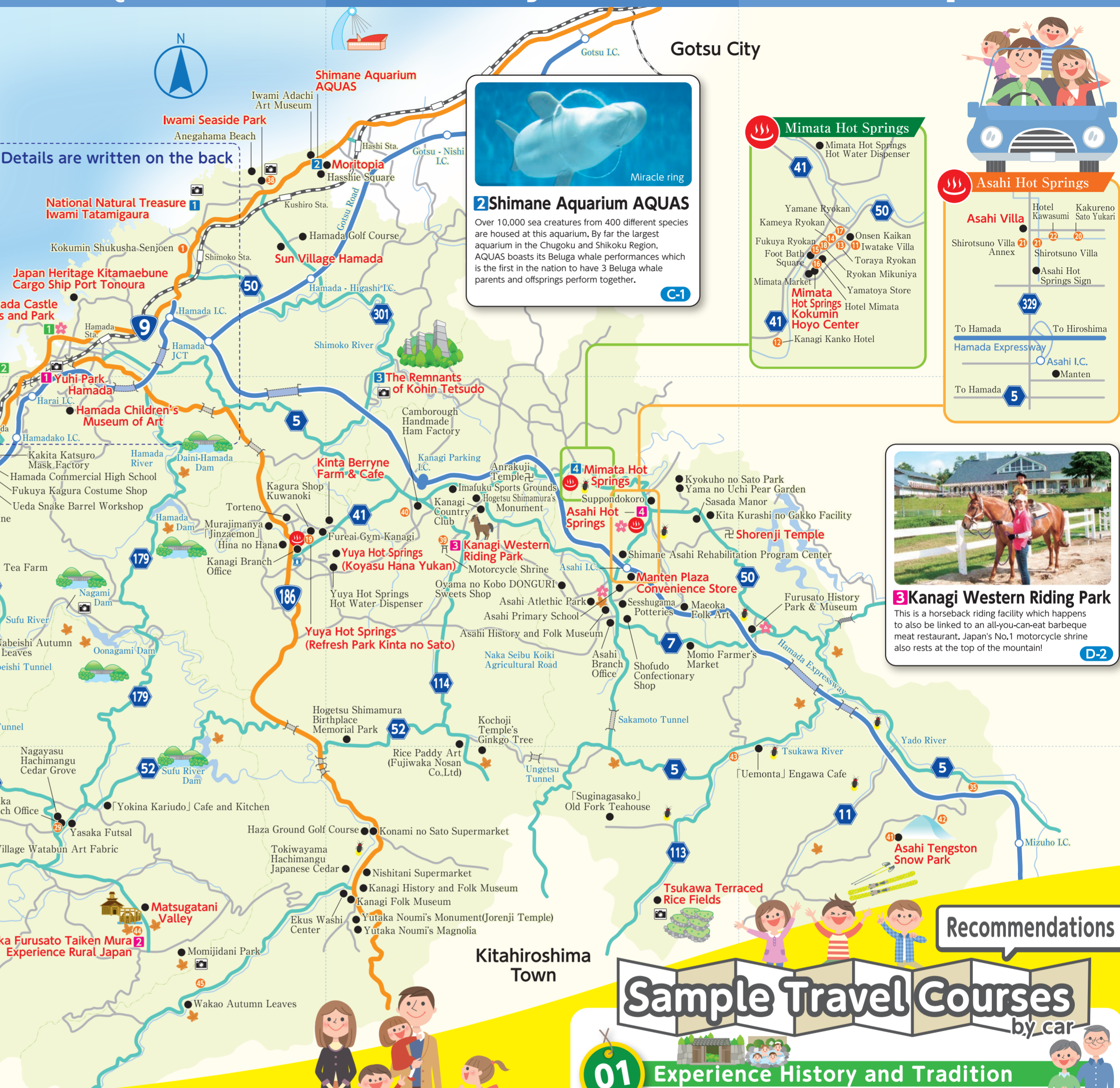
map symbols

- Flower-viewing
- Hot Springs
- National Highway
- Autumn Leaves
- Poplar
- Expressway
- Photo Spot
- Lawson
- JR
- Firefly-viewing
- Seven-Eleven
- Accommodations

1~5, 1~4, 1~4 Sample Travel Course



Details are written on the back



2 Shimane Aquarium AQUAS
Over 10,000 sea creatures from 400 different species are housed at this aquarium. By far the largest aquarium in the Chugoku and Shikoku Region, AQUAS boasts its Beluga whale performances which is the first in the nation to have 3 Beluga whale parents and offsprings perform together.

Mimata Hot Springs
Mimata Hot Springs Hot Water Dispenser

Asahi Hot Springs
Asahi Villa

3 Kanagi Western Riding Park
This is a horseback riding facility which happens to also be linked to an all-you-can-eat barbecue meat restaurant, Japan's No.1 motorcycle shrine also rests at the top of the mountain!

Sample Travel Courses by car

- 01 Experience History and Tradition**
JR Hamada Sta. ⇒ (10mins.) ⇒ Hamada Castle Ruins (Experience Hamada's History) ⇒ (10mins.) ⇒ Shimane Fish Center (Rich in Fresh Seafood Lunch) ⇒ (20mins.) ⇒ Yui Park Misumi (Catch a lovely view of the coast during your train ride) ⇒ (10mins.) ⇒ Sekishu Washi Center (Try your hand at a UNESCO Intangible Cultural Heritage) ⇒ (25mins.) ⇒ Kowa Hot Springs (Relax at this calm and peaceful hot spring)
- 02 Hamada = The Sea!**
JR Hamada Sta. ⇒ (20mins.) ⇒ Iwami Tatamigaura (Designated National Natural Treasure - Leap through 16 million years of History) ⇒ (15mins.) ⇒ Shimane Aquarium AQUAS (Meet the famous Beluga Whale at the largest aquarium in the Chugoku and Shikoku Region) ⇒ (15mins.) ⇒ The Remnants of Kohin Tetsudo (Explore the Phantom Railways - What used to be) ⇒ (20mins.) ⇒ Mimata Hot Springs (PH9.9, Experience the healing powers and smoothness of Mimata Hot Springs on your skin)
- 03 Satisfy your Thirst for RURAL JAPAN**
JR Hamada Sta. ⇒ (10mins.) ⇒ Yui Park Hamada (Enjoy the view of the Hamada's Fishing Harbor while exploring local specialties) ⇒ (40mins.) ⇒ Yasaka Furusato Taiken Mura (Experience rural Japan Lunch) ⇒ (45mins.) ⇒ Kanagi Western Riding Park (Enjoy feeding horses - Horseback Riding) ⇒ (15mins.) ⇒ Asahi Hot Springs (Refresh and relax in the soft touches of this Hot Spring)

Hamada City Map

map symbols

- Flower-viewing
- Autumn Leaves
- Photo Spot
- Firefly-viewing
- Parking Lot
- Hot Springs
- Poplar
- Lawson
- Seven-Eleven
- Car Rental
- National Highway
- Expressway
- JR
- Bus Stop
- Accommodations

1~5 • 1~4 • 1~4 Sample Travel Course

0 1km

JR Hamada Station Map

Local Souvenir Lounge

① Hamada Children's Museum of Art • Hamada Castle Ruins
Shimane Fish Center • Refresh Park Kinta no Sato
Mimata Hot Springs • Osaka (Nightbus)

② Iwami Tatamigaura • Shimane Aquarium AQUAS • Kokufu Beach

③ Sekishu Washi Center • Sekisho Art Museum

(Highway) Asahi Hot Springs • Hiroshima • Osaka (Daybus)

JR Hamada Station Local Souvenir Lounge

If you're looking for Hamada City travel guides or are looking to snag local souvenirs and specialties, then this is the place for you!

1 Hamada Castle Ruins

Built during the Edo Period, this castle was the central of Hamada's ruling authorities until it was destroyed by troops in the Second Choshu expedition in 1866.

1 National Natural Treasure: Iwami Tatamigaura

Travel through 16 million years of history! In addition to the seaside view and sea creatures, you can also see different layer formations of the sea floor as well as various fish fossils at the natural museum.

2 Shimane Fish Center

This fish center houses many different kinds of fresh fish caught locally at Hamada Fishing Port, a prominent fishing port in the San'in Region. We also recommend one of the restaurants here where you can enjoy fish from all four different seasons!

Hamada Iwami Kagura Weekend Night Performance

Enjoy this magnificent traditional performance at a local shrine. Performances are held every Saturday from 20:00~!

Bicycle Rental HAMACHARI

Explore Hamada with HAMACHARI!

はまチャリ

Information: Hours 9:00~17:45. You may rent and return bicycles at Hamada Tourism Association. We take reservations via telephone or the reception window. When visiting us, please make sure to bring your driver's license or other forms of identification. Thank you for your cooperation.

Reservations, Enquiries: Hamada Tourism Association TEL. 0855-24-1085 Asai, Hamada city

Rental Fees (Including Tax)	3hours	1day
Bicycle Rental	700yen	1,000yen
Electric Bicycle	700yen	1,000yen
Bicycle	500yen	800yen

Hamada Tourism Association Portal Site

<http://www.kankou-hamada.org/>

はまナビ HAMA NAVI

For popular sight-seeing spots and events in Hamada, leave it to HAMA NAVI! You can get information and updates of seasonal events and sight-seeing spots using this site, so definitely check this out before you plan your trip!

Enquiries, Publications

Hamada Tourism Association

Asai, Hamada city, Shimane Prefecture
TEL 0855-24-1085 FAX 0855-24-1081
Open from 9:00 am to 5:45 pm